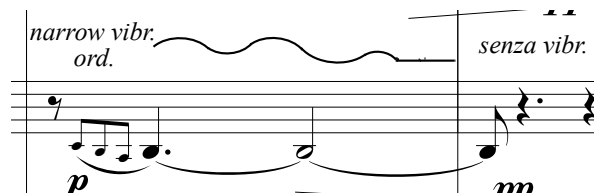


Performance Notes:

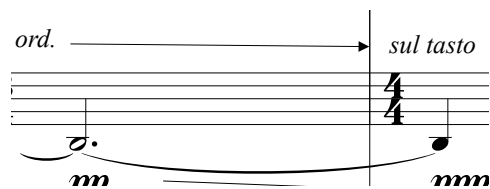
- Grace notes are always on the beat.
- Narrow vibrato/ Fast& wide vibrato: The exact amount and speed is to be decided by the player according to the music, dynamic and texture.



- To be played as double notes: A on sul A and D as a harmonic on Sul D



- Moving from narrow vibrato gradually to no vibrato.



- Moving gradually to sul tasto bowing.